

Overlap Reverse Apex Shed 6' x 4'

IMPORTANT, RETAIN FOR FUTURE REFERENCE; READ CAREFULLY

This building is pre-treated with a factory base coat for protection during storage and transit. We recommend that you treat your new building as soon as possible after assembly using a wood preservative treatment. Apply in accordance with the manufacturers instructions.

- This product must be built on a solid level base.
- The roof of this building is not a load bearing structure.
- Please keep all plastic bags and small parts away from children.
- Timber is a natural material. It will shrink and swell as a result of varying moisture content.
- Due to the nature of the material the doors may need some trimming for a neater fit.

Technical Help line: **0333 7777 089** 8.30am and 5.00pm
Monday to Friday.

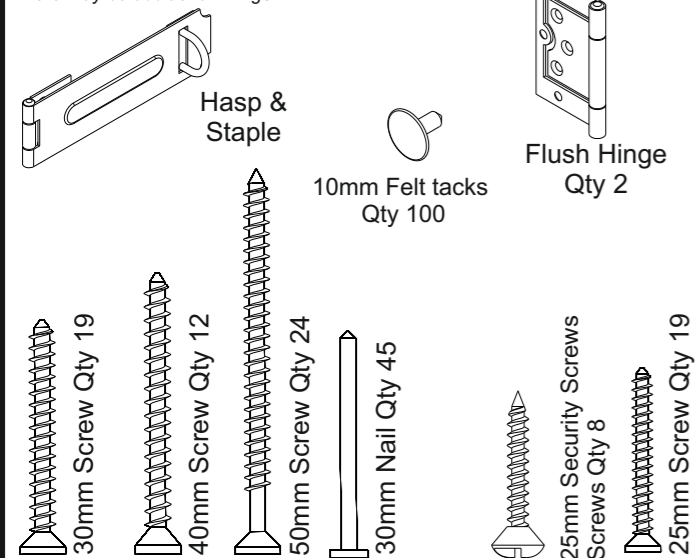
Please check all parts prior to assembly

Assembly of damaged parts may be deemed to be acceptance and this may affect the remedies you are entitled to.
If the product is not constructed in accordance with the instructions, or is altered in anyway (e.g. painted), the manufacturer cannot be held liable for any resulting damage.

Fixing Pack (OPA46FP)

This fixing pack is used for several products.
There may be additional fixings.

Not to Scale



REQUIRED TOOLS : (NOT SUPPLIED)



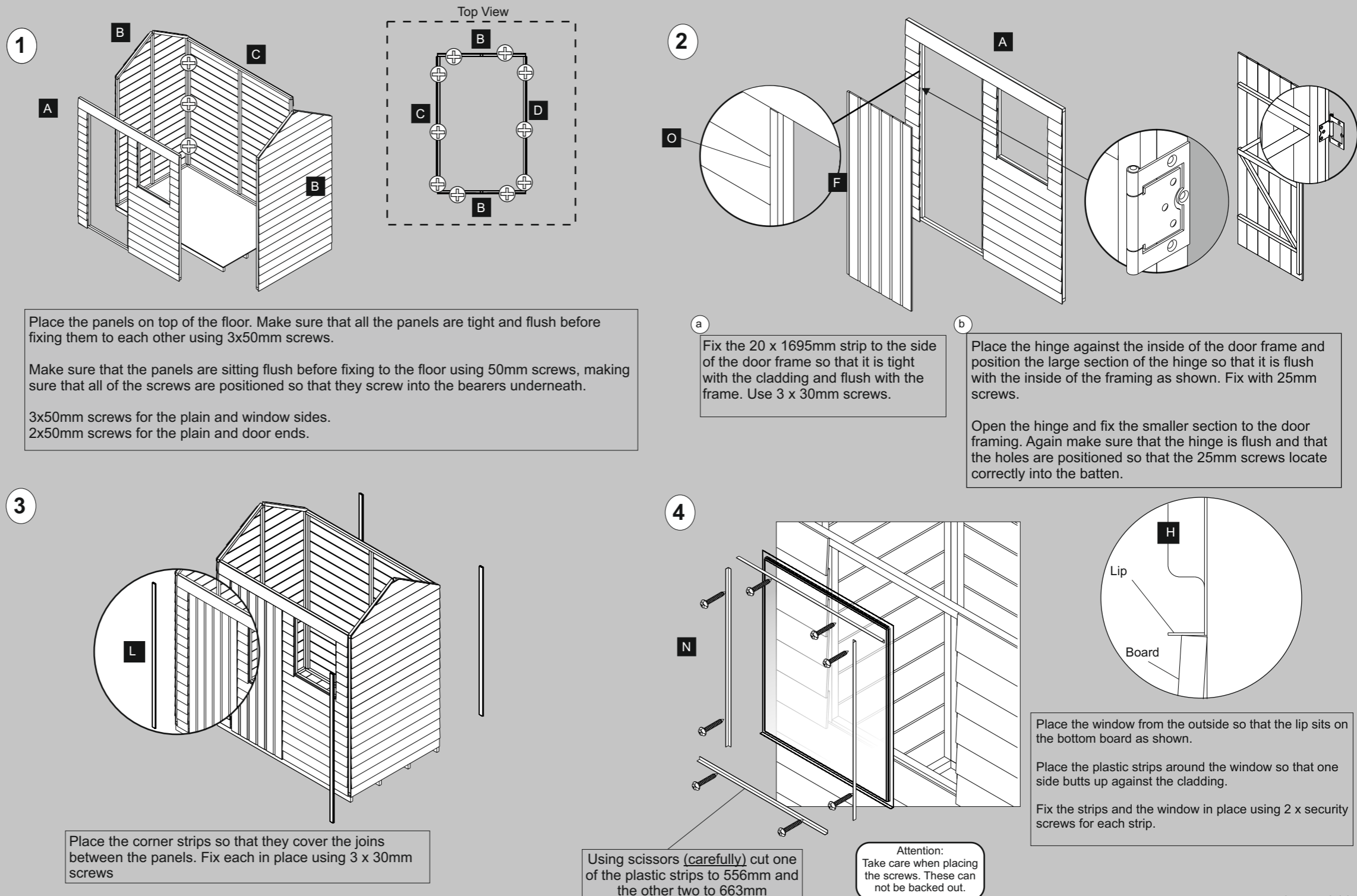
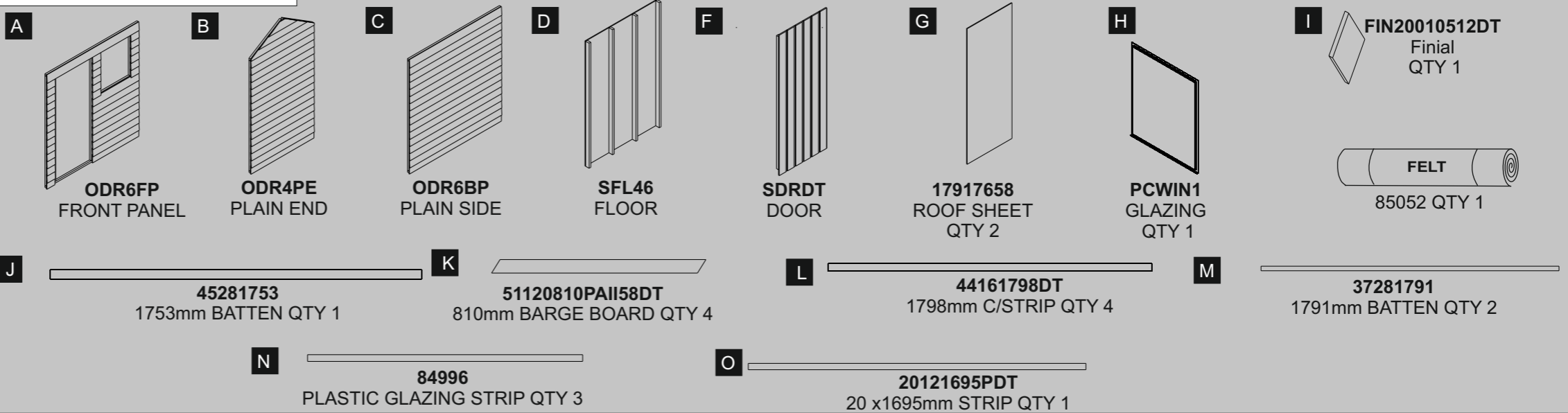
Important :
Assembly of this
shed requires a
minimum of two
adults.



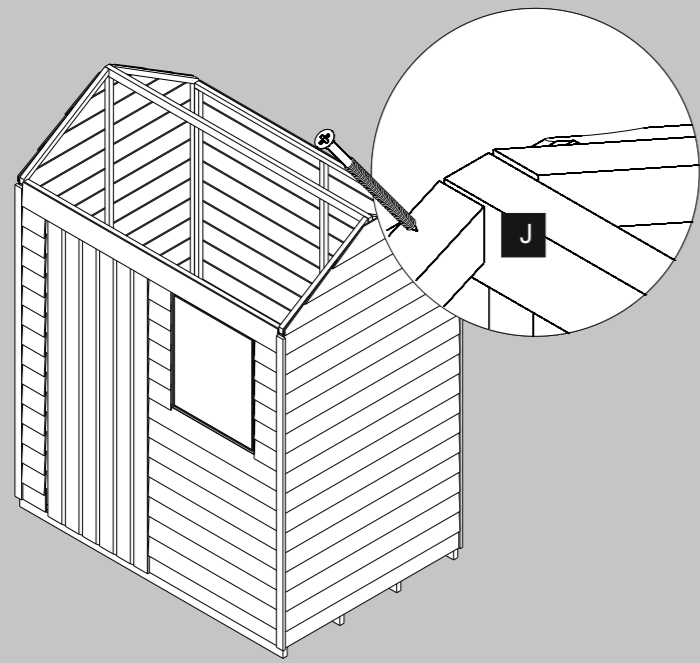
Must Pre-drill for
each screw used.



ODR64 PARTS LIST

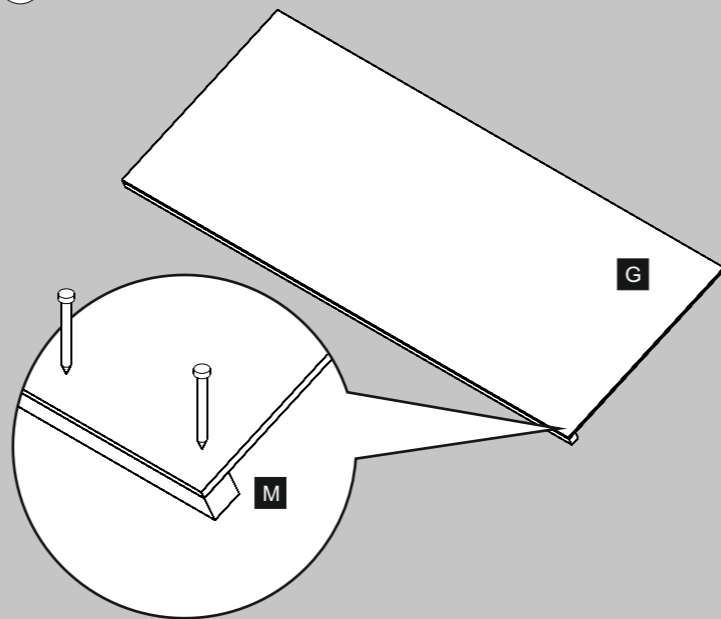


5



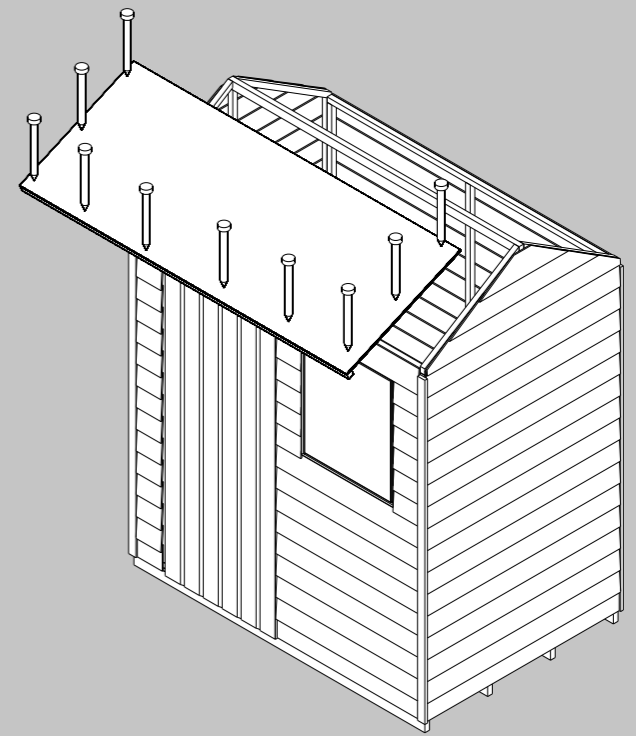
Place the 1753mm batten so that it connects the door end and plain end. Fix this in position using a 50mm screw for each end as shown.

6



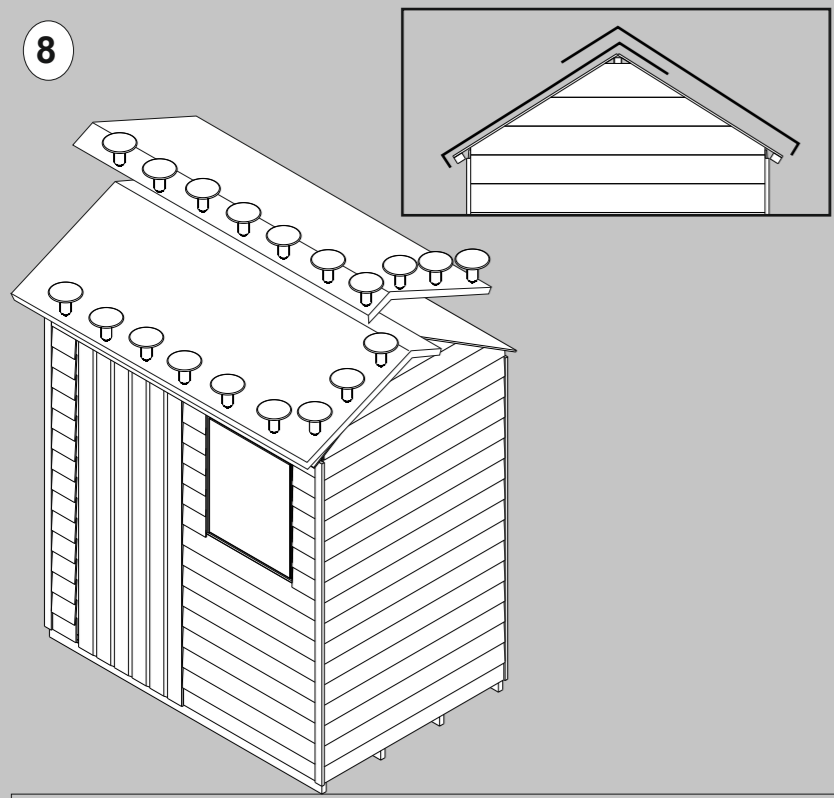
Place the roof board on to one of the 1791mm battens. Make sure that the board is flush on all sides.
Fix each batten in place using 30mm nails spaced in 300mm intervals.
(Repeat for the other roof section)

7



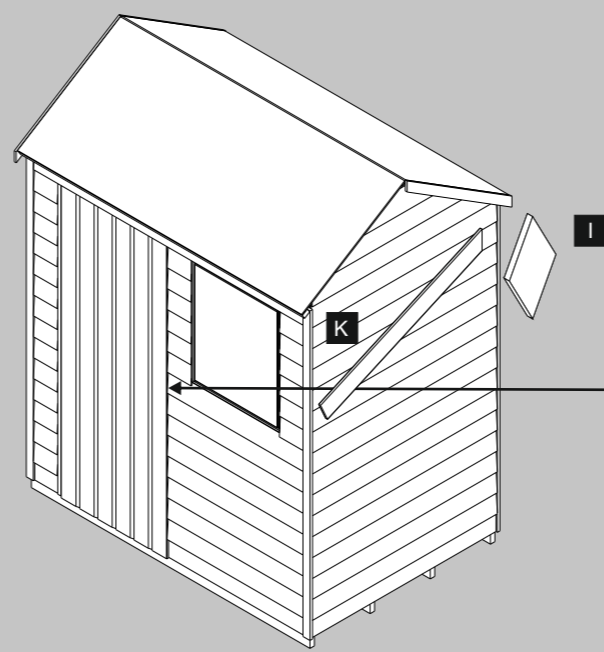
Lift the roof sections into place making sure that they are in line with the apex and the front and back panels of the shed.
Fix the roof in place using 30mm nails spaced in approximately 300mm intervals.
(Make sure the nails locate into the framework of the panels)

8



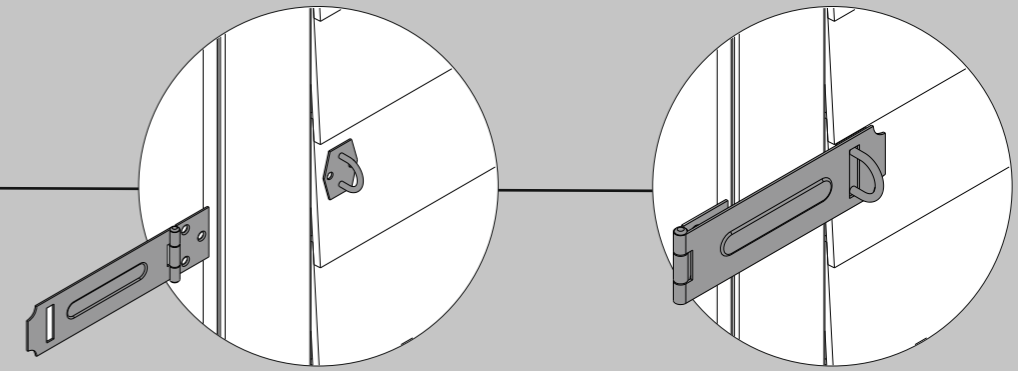
Unroll the felt and cut in to two equal lengths. Place the sheets on each side so that there is a 50mm overhang on the eaves and they overlap at the apex. Fix these to the roof using felt nails spaced in 150mm intervals. Cut and fold the corners securing with a single felt nail for each.

9



Place the barge boards against the front and back of the shed. Make sure that these are in line with the roof sheet and meet at the apex. Fix each in place using 3 x 40mm screws.
Place the finial over the top of where the barge boards meet and fix it in place using 2 x 30mm screws.

10



Position the staple on the door end in line with the centre batten on the reverse of the door. Making sure that the staple is in line with the framing behind, fix it in place using 2 x 25mm screws.
Before fixing the Hasp to the door, make sure that it is in line with the framing on the reverse of the door and that it closes over the Staple. Fix this in place using 3 x 25mm screws.

Biocidal Product Regulation (EU 528/2012) Article 58 Information

This article contains timber treated with Celcure AC-500, incorporating biocidal products to give protection against wood destroying insects & wood rotting fungi.
Contains: Basic copper carbonate (Copper (II) carbonate – Copper (II) hydroxide (1:1)), Boric acid, Benzalkonium chloride.
Wear gloves when handling freshly treated wood. Avoid breathing dust when cutting treated or untreated wood. Dispose of off-cuts responsibly – do not burn.

Maintenance.

We recommend that you treat your shed at the beginning of each season with wood preservative treatment. Apply in accordance with the manufacturers instructions.
Regularly check (1) All fixings are secure (2) Roofing felt is free of holes and tears (3) Sand off any rough/sharp edges.