

# Overlap Apex Shed 6' x 4'

IMPORTANT, RETAIN FOR FUTURE REFERENCE; READ CAREFULLY

This buildings is pressure treated to ensure longevity of all timber components and to protect against rot. This may leave a colour difference on some parts that will even out as the moisture content stabilises. This will not need additional treatment.

- Timber is a natural material. It will shrink and swell as a result of varying moisture content.
- Due to the nature of the material the doors may need some trimming for a neater fit.
- Please keep all plastic bags and small parts away from children
- The roof of this building is not a load bearing structure.
- This product must be built on a solid level base.

Technical Helpline: **0333 7777 089** 8.30 am and 5.00 pm Monday to Friday.

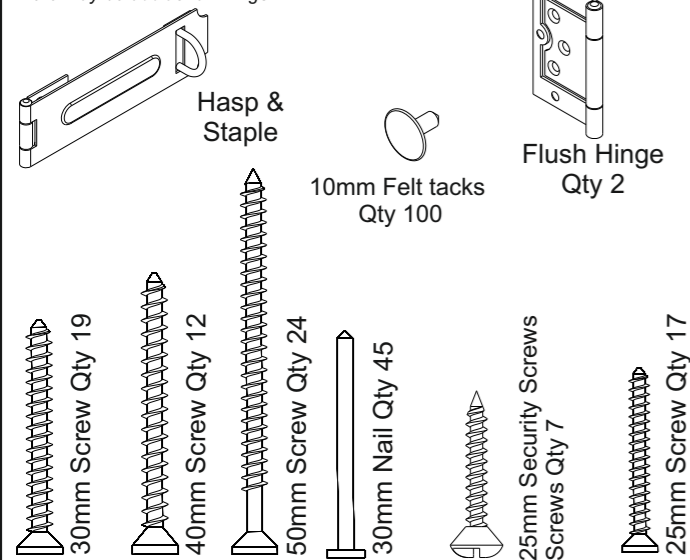
### Please check all parts prior to assembly

Assembly of damaged parts may be deemed to be acceptance and this may affect the remedies you are entitled to. If the product is not constructed in accordance with the instructions, or is altered in anyway (e.g. painted), the manufacturer cannot be held liable for any resulting damage.

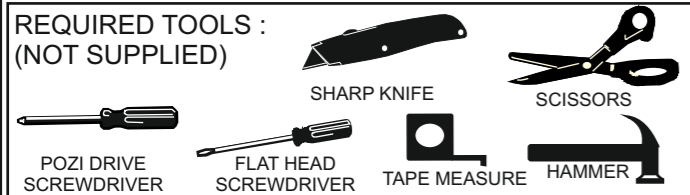
### Fixing Pack (OPA46FP)

*This fixing pack is used for several products. There may be additional fixings.*

Not to Scale



### REQUIRED TOOLS : (NOT SUPPLIED)



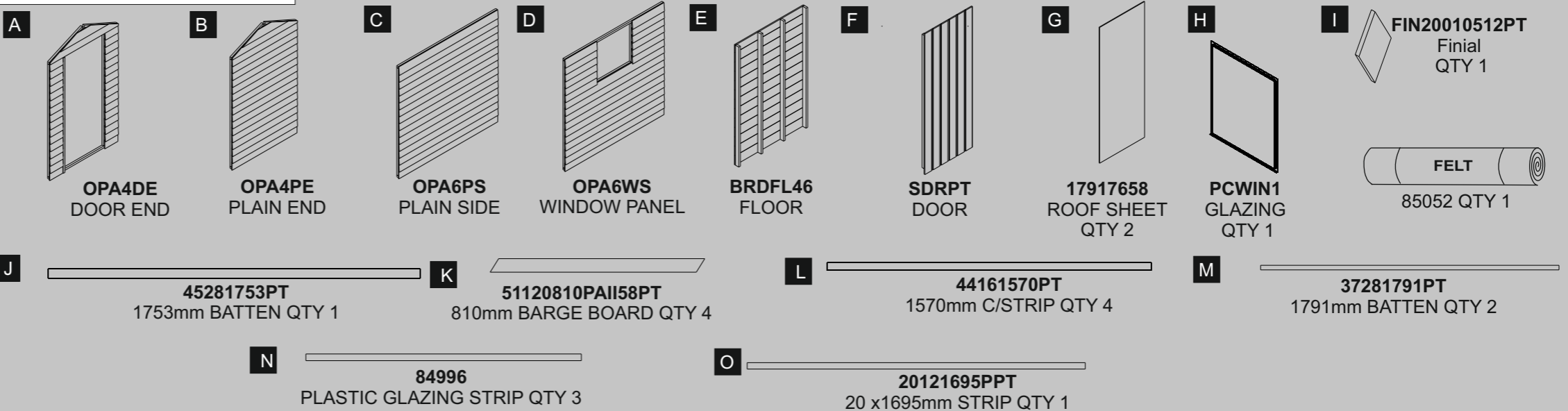
Important :  
Assembly of this shed requires a minimum of two adults.



Must Pre-drill for each screw used.



## OPA46 PARTS LIST



**1**

Place the panels on top of the floor. Make sure that all the panels are tight and flush before fixing them to each other using 3x50mm screws.

Before fixing the panels to the floor using 50mm screws, take care and make sure that they are all sitting flush. All of the screws should be positioned so that they screw into the bearers underneath.

3x50mm screws for the plain and window sides.  
2x50mm screws for the plain and door ends.

**2**

**a** Fix the 20 x 1695mm strip to the side of the door frame so that it is tight with the cladding and flush with the frame. Use 3 x 30mm screws.

**b** Place the hinge against the inside of the door frame and position the large section of the hinge so that it is flush with the inside of the framing as shown. Fix with 25mm screws.

Open the hinge and fix the smaller section to the door framing. Again make sure that the hinge is flush and that the holes are positioned so that the 25mm screws locate correctly into the batten.

**3**

Place the corner strips so that they cover the joints between the panels. Fix each in place using 3 x 30mm screws

**4**

Using a scissors carefully cut one of the plastic strips to 559mm.

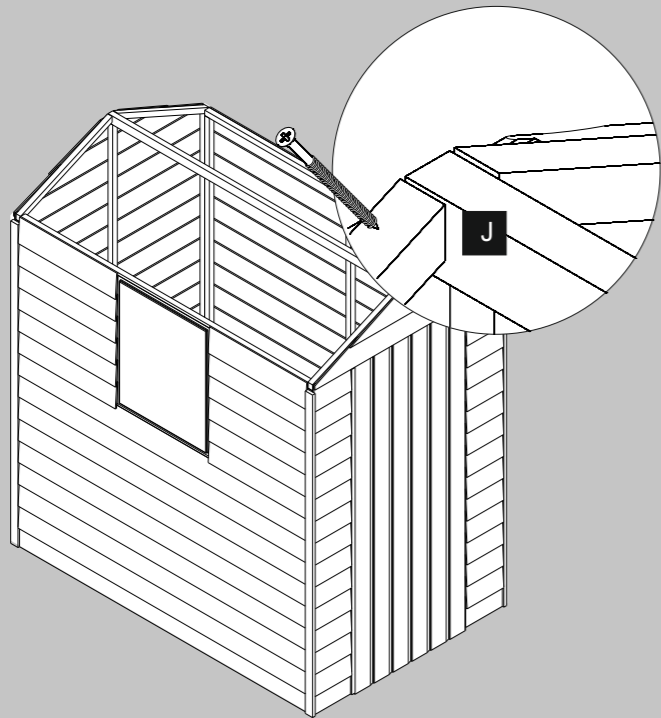
Attention: Take care when placing the screws. These can not be backed out.

Place the window from the outside so that the lip sits on the bottom board as shown.

Place the plastic strips around the window so that one side butts up against the cladding.

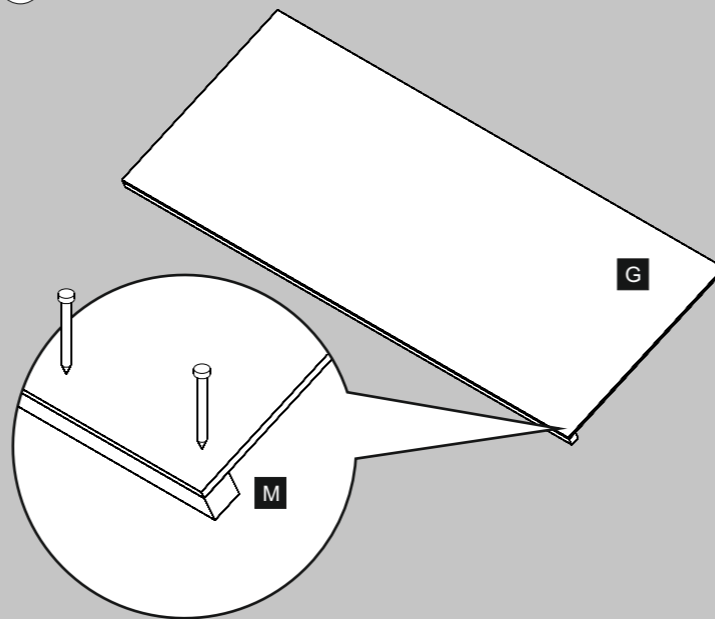
Fix the strips and the window in place using 2 x security screws for each strip and one for the top of the window.

5



Place the 1755mm batten so that it connects the door end to the plain end. Fix this in position using a 50mm screw for each end as shown.

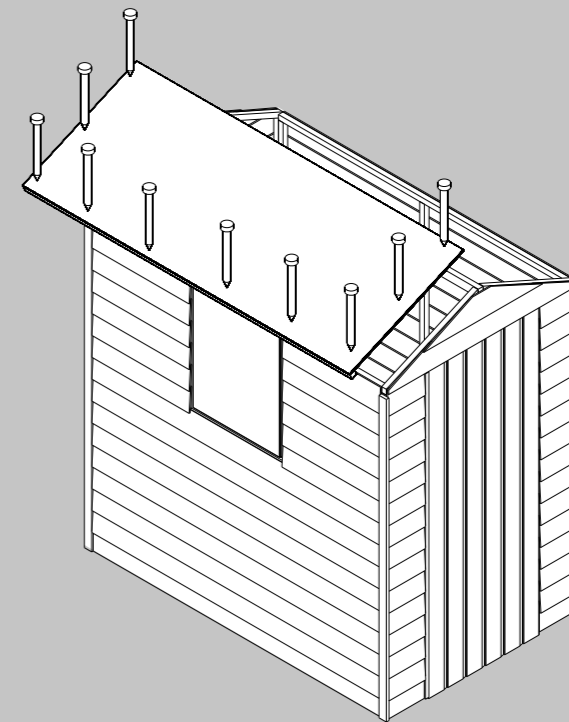
6



Place the roof board on to one of the 1791mm battens. Make sure that the board is flush on all sides.

Fix each batten in place using 30mm nails spaced in 300mm intervals. (Repeat for the other roof section)

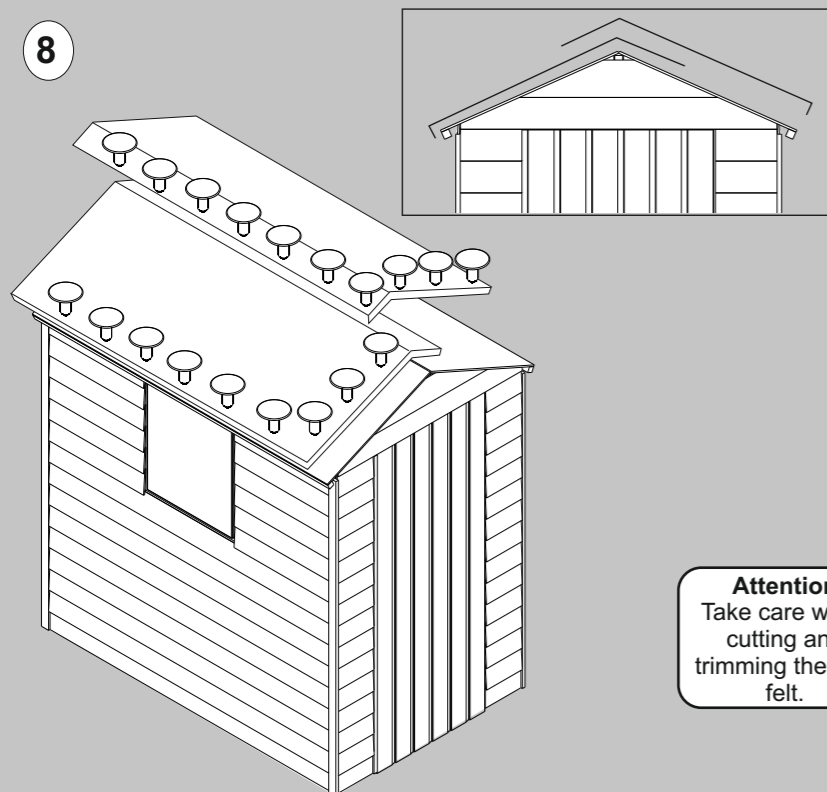
7



Lift the roof sections into place making sure that they are in line with the apex and the front and back panels of the shed.

Fix the roof in place using 30mm nails spaced in approximately 300mm intervals. (Make sure the nails locate into the framework of the panels)

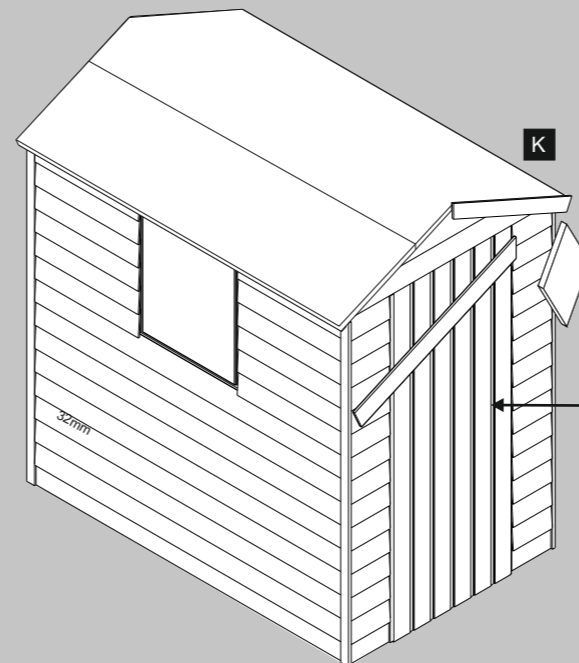
8



**Attention**  
Take care when cutting and trimming the roof felt.

Unroll the felt and cut it in to two equal lengths. Place the sheets on each side so that there is a 50mm overhang on the eaves and they overlap at the apex. Fix these to the roof using felt nails spaced in 150mm intervals. Cut and fold the corners securing with a single felt nail for each.

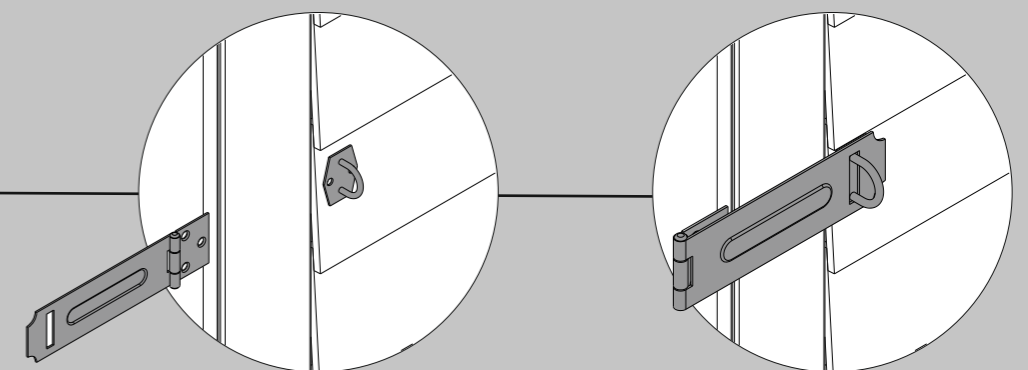
9



Place the barge boards against the front and back of the shed. Make sure that these are in line with the roof sheet and meet at the apex. Fix each in place using 3 x 40mm screws.

Place the finial over the top of where the barge boards meet and fix it in place using 2 x 30mm screws.

10



Position the staple on the door end in line with the centre batten on the reverse of the door. Making sure that the staple is in line with the framing behind, fix it in place using 2 x 25mm screws.

Before fixing the Hasp to the door, make sure that it is in line with the framing on the reverse of the door and that it closes over the Staple. Fix this in place using 3 x 25mm screws.

**Biocidal Product Regulation (EU 528/2012) Article 58 Information**

This article contains timber treated with Celcure AC-500, incorporating biocidal products to give protection against wood destroying insects & wood rotting fungi.

**Contains:** Basic copper carbonate (Copper (II) carbonate – Copper (II) hydroxide (1:1)), Boric acid, Benzalkonium chloride.

Wear gloves when handling freshly treated wood. Avoid breathing dust when cutting treated or untreated wood. Dispose of off-cuts responsibly – do not burn.

**Maintenance.**

Regularly check all fixings are secure and the roofing felt has no holes or tears.

Sand off any rough/sharp edges.