

BERMUDA



Breeze Air Pumps

Instruction Manual

IMPORTANT: Please read this instruction manual carefully before using this product. Keep the manual safe for future reference.

Thank you for purchasing a Bermuda Breeze Air Pump. The Bermuda air pump is ideal for using in a pond as it helps create a healthier environment for fish and aquatic plants. The Bermuda Air Pump will significantly increase the amount of oxygen and reduce carbon dioxide levels. Aeration in the pond is extremely important in warm weather when oxygen levels reduce. A higher level of oxygen is required when treating fish diseases as treatments can diminish oxygen. They are also ideal for keeping an area of your pond ice free during the winter months.

Attention

1. Keep out of the reach of children.

2. A drip loop should be installed in the cable, to ensure that water cannot travel down it and into an electrical socket.
3. An RCD (of which the rated working current is not over 30mA) must be installed when using the pump, and the power socket must be connected to an earth.
4. Bermuda Air Pumps are designed to sit outside the pond.
It must not be submerged in water.
5. Always disconnect the power supply when handling, servicing or maintaining the pump.
6. Do not attempt to unplug the pump or disconnect from the power supply with wet hands.
7. Do not carry or retrieve the air pump by pulling the electrical cable.
8. The power cable cannot be replaced. If the power cable becomes damaged near to the pump body it cannot be replaced, and electricals are sealed inside the unit to make them waterproof.

Installation

To comply with Part P of Local Authority Building Regulations, the air pump does not have a fitted plug. The air pump should be hard wired into the mains by way of an RCD (Residual Current Device) with a tripping current not exceeding 30mA. You must always consult a qualified electrician or local authority if you have any doubt about wiring to the mains supply.

WARNING: This appliance must be earthed and it is essential that all connections are securely made using the following code.

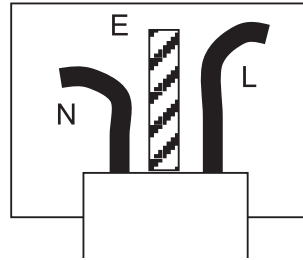
IMPORTANT

The wires in the mains lead are coloured in accordance with the following code:

Green-and-yellow: Earth (E)

Blue: Neutral (N)

Brown: Live (L)



The air pump is supplied complete with 10M of 3-core electrical cable, which is permanently connected and sealed to the motor.

The supply cable of this air pump cannot be replaced; if the cable is damaged, the pump should be discarded.

Ensure all electrical connections are kept dry. The air pump is designed to sit outside the pond. Under no circumstances can it be submerged in water. The air pump is fitted with a thermal cut-out that temporarily switches off the air pump if overheating occurs. The pump will automatically restart once it has cooled sufficiently.

Location and connection

Install the air pump above the water level to avoid back siphoning of the pond water into the air pump. The air pump should be located on a firm level surface such as a concrete floor or patio slab so that the air pump does not vibrate and cause excessive noise.

Connect the small piece of plastic tube to the air pump outlet and then connect the air divider valve to the other end of the plastic tube. Connect an air stone to one end of the clear air tube and the other end to the air divider valve outlet. Repeat for all air stones, ensuring that the outlet valves are in the fully open position before the air pump is started.



Valves in the open position



Valves in the closed position

Operation

Switch on the air pump. If the overall air output is too high it is recommended that one of the air stones and air lines is removed and the remaining valves opened to reduce the air output to the remaining stones.

Adjustments to individual air stones can now be made. Shut off the individual valves in small amounts until the desired output is achieved.

Cleaning and maintenance

The Bermuda Breeze range of air pumps are designed to run continuously with the minimum amount of maintenance. Ideally, all outlets should have an air line and air stone connected and used, this will give the pond maximum aeration and ensure that damaging back-pressure is kept to a minimum.

Regular cleaning of the air stones and hose is advised to maintain optimum air flow into the water. Air stones will become blocked which will reduce the performance of the pump over time, so replacing air stones every 12 months will ensure complete aeration of your pond.

IMPORTANT: If all the pump air outlets are not needed ensure that one of the valve outlets is opened in order to bleed off some of the airflow, which will adjust the air output to the remaining stones. This will reduce noise levels by reducing the back pressure on the pump and extend the life of the air pump.

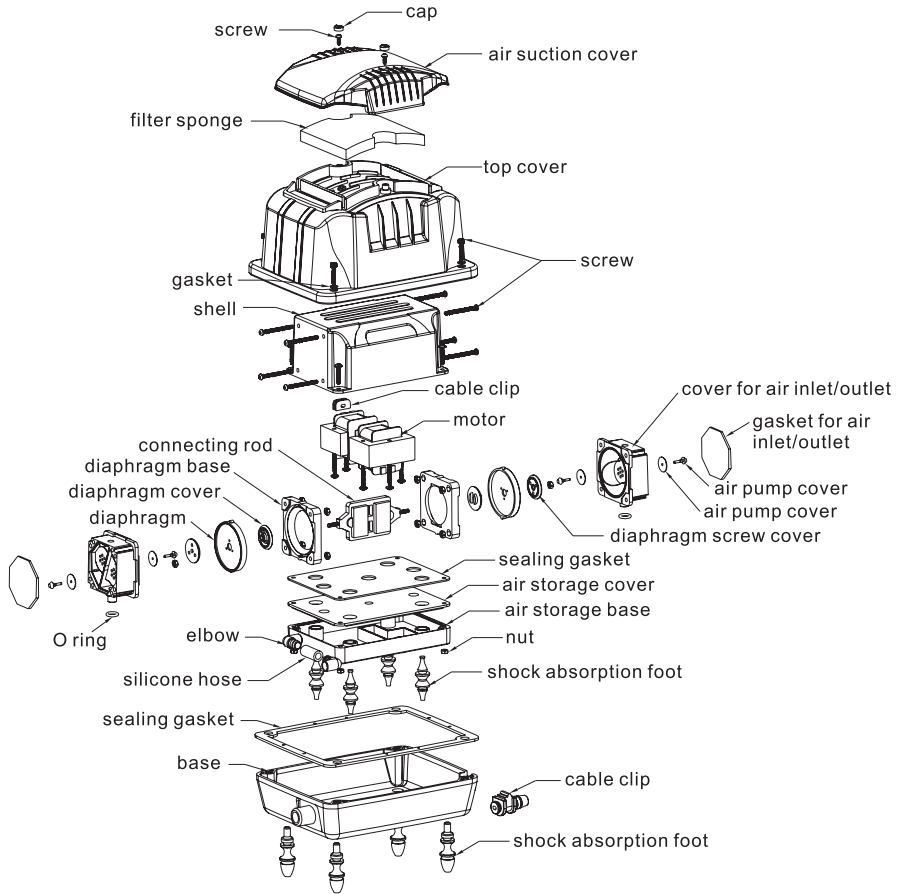
Check and clean the filter sponge at the top of the air pump

Remove the screw caps on the top of the air pump.

Remove the two screws and lift off air suction cover on the top of the air pump.

Remove the white filter sponge and clean with running water, ensuring completely dry before re-assembling.

Exploded view



Disposal

This product should not be discarded with your general household waste. It should be taken to your local authority collection point

Trouble shooting

Low Air Output/Noisy Operation

- Ensure the air pump is on a level surface.
- When replacing air lines ensure they are replaced with silicone tubing, as supplied.
- Check that the air tubing has no kins.
- If the pump is too powerful for your requirements, opening one of the air valves without an air line will bleed off unwanted air flow and dramatically reduce the noise. Placing the air stones deeper in the water increases the back pressure on the pump, as it must work harder so will become noisy.
- Check and replace old blocked and dirty air stones.
- Check filter sponge and clean if necessary.

No Air Output/Pump Stopped

- Check that the power supply is on.
- Check fuses and wiring.
- Check that the air outlet valves are open.
- Check the filter sponge and clean if necessary.

Specifications

MODEL	BER CODE	VOLTAGE	FREQUENCY	OUTPUT	POWER	PRESSURE	AIR STONES	DIMENSIONS
BREEZE 10	BER0500	AC230/115V	50/60Hz	10 lpm	10W	0.02MPa	2	187 X 107 X 114mm
BREEZE 20	BER0501	AC230/115V	50/60Hz	20 lpm	15W	0.02MPa	2	224 X 139 X 144mm
BREEZE 30	BER0502	AC230/115V	50/60Hz	30 lpm	25W	0.025MPa	4	275 X 167 X 176mm
BREEZE 40	BER0503	AC230/115V	50/60Hz	40 lpm	30W	0.03MPa	4	275 X 167 X 176mm

Guarantee

This product is guaranteed against defects in material and workmanship for **one year** from the date of purchase, under normal usage. The guarantee **DOES NOT APPLY** in case of improper use, negligence, lack of maintenance or accidental damage to the pump. If the pump fails due to a manufacturing fault within this period it will be either repaired or replaced free of charge. Moving parts or wearable parts including the impeller and any washers or O rings are not covered by the guarantee and are available to order from your Bermuda retailer.

Should your Bermuda product stop working refer first to trouble shooting and if this does not help, return the product to the place of purchase.

Liability is limited to replacement of the faulty product only. No other costs will be reimbursed. This guarantee is not transferable and does not affect your statutory rights.

Do not attempt to tamper with or access electrical components inside the pump body. Doing so will invalidate the warranty.

The manufacturer or supplier shall not be responsible, or held liable for any damages caused by defective components or materials of this product, or for loss incurred by interruption of service, or any consequential/incidental damages and expenses arising from the production, sale use or misuse of this product or any other consequential loss.

Any warranty claim must be accompanied by a valid, dated proof of purchase. Evolution Aqua, Bermuda, its distributors and dealers shall not be held liable for any loss of fish, plants or any other livestock as a result of any failure or defect of this product.

The installation and use of your product outside of our recommendations as printed in this manual may also void the warranty.

www.bermudawatergardens.com

BERMUDA an Evolution Aqua brand.
Evolution House, Kellet Close, Wigan, Lancashire, WN5 0LP

DISTRIBUTED BY: Certikin, Witan Park, Avenue 2,
Station Lane Industrial Estate, Witney, Oxfordshire, UK, OX28 4FJ