

BERMUDA



Fountain Pumps

Ideal for fountains and waterfalls

Instruction Manual

IMPORTANT: Please read this instruction manual carefully before using this product. Keep the manual safe for future reference.

Thank you for purchasing a Bermuda outdoor Fountain Pump. Fountain Pumps are compact and versatile, and capable of creating decorative fountains, supplying water features or small filters. The foam free filter casing ensures low maintenance and the longest possible periods between cleaning. To ensure that this product is safely and correctly used and at its optimal performance, please read this instruction booklet carefully before use.

Attention

1. Keep out of the reach of children.
2. A drip loop should be installed in the cable, to ensure that water cannot travel down it and into an electrical socket.
3. An RCD (of which the rated working current is not over 30mA) must be installed when using the pump, and the power socket must be connected to an earth.
4. Bermuda Fountain Pumps are designed for under water use only. Running the pump dry, without water inside the pump, is strictly prohibited. Dry running may also cause irreparable damage, and invalidate any warranty.
5. The device must not be used to pump any flammable liquids or water with a temperature higher than 35°C.
6. Always disconnect the power supply when handling, servicing or maintaining the pump.
7. Do not attempt to unplug the pump or disconnect from the power supply with wet hands.
8. Do not carry or retrieve the pump from the pond by pulling the electrical cable.
9. The power cable cannot be replaced. If the power cable becomes damaged near to the pump body it cannot be replaced, and electricals are sealed inside the unit to make them waterproof.

Features

- Highly insulated and water proof.
- New, high performance impeller design.
- Built-in overcurrent and overheat protection.
- Multi-functional design, suitable for supplying water features, fountains or small filters.
- Simple to use and maintain.
- Steady and quiet performance.

Usage

Only suitable for use in outdoor ponds, water features, filters etc. Can be run continuously, 24 hours per day.

1. The pump should be in more than 20cm of water to operate properly.
2. Hose and hose clips may be necessary (not supplied,) if using with a separate pond filter.
3. The flow is adjustable on some models by way of a supplied 'T' piece.

Maintenance

Regularly inspect and clean the pump housing to make sure it has not accumulated too much dirt, algae and leaves. Visibly reduced pump flow is a strong indicator that either the pump intake is nearly completely blocked, or the hose, or fountain heads are blocked, and needs cleaning. Always check that the Fountain Pump is submerged in water. Small water reservoirs can lose water rapidly through evaporation, causing the pump to run dry, and flow to stop.

Cleaning

Step 1: Remove the front cover from the pump by squeezing the sides and pulling it away.

Step 2: Turn the impeller housing anticlockwise to expose the impeller inside.

Step 3: Carefully remove the impeller and central, ceramic shaft.

Step 4: Inspect the shaft and make sure it is clean and in one piece. Clean the impeller and check that it is not cracked, and all blades are intact.



Step 1



Step 2



Step 3

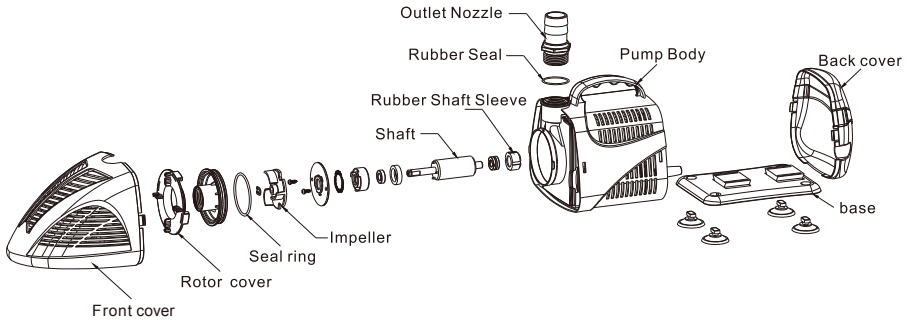


Step 4

Trouble shooting

1. If the pump is not working after being connected, please check if the plug is loose, if it has been properly wired into the plug, RCD plug or outdoor switchbox, and that the plug and cable are not damaged. Never dismantle the pump by yourself if malfunction occurs. Check that the RCD has been reset and power to outdoor electricals is switched on, and not tripped or fused.
2. If the motor of the pump is running but with less water flow or water pressure, check that the pump housing is not already blocked by too much dirt and leaves, and that the Head Max (height of water it is pumping to) has not been exceeded.
3. Check that there is sufficient water in the pond or reservoir to ensure that the pump is under water at all times.

Exploded view



Specifications

MODEL	BER CODE	OUTPUT	POWER	MAX HEIGHT	FOUNTAIN HEADS	DIMENSIONS
1000	BER0251	1,000lph / 220gph	16 watts	1.5m	2	188 x 97 x 115mm
2000	BER0253	2,000lph / 440gph	35 watts	2.5m	3	228 x 118 x 143mm
3000	BER0254	3,000lph / 660gph	55 watts	2.8m	3	289 x 149 x 177mm
4000	BER0255	4,000lph / 880gph	75 watts	3m	3	289 x 149 x 177mm

Guarantee

This product is guaranteed against defects in material and workmanship for **three years** from the date of purchase, under normal usage.

The guarantee **DOES NOT APPLY** in case of improper use, negligence, lack of maintenance or accidental damage to the pump. If the pump fails due to a manufacturing fault within this period it will be either repaired or replaced free of charge. Moving parts or wearable parts including the impeller and any washers or O rings are not covered by the guarantee and are available to order from your Bermuda retailer.

Should your Bermuda product stop working refer first to trouble shooting and if this does not help, return the product to the place of purchase.

Liability is limited to replacement of the faulty product only. No other costs will be reimbursed. This guarantee is not transferable and does not affect your statutory rights.

Do not attempt to tamper with or access electrical components inside the pump body. Doing so will invalidate the warranty.

The manufacturer or supplier shall not be responsible, or held liable for any damages caused by defective components or materials of this product, or for loss incurred by interruption of service, or any consequential/incidental damages and expenses arising from the production, sale use or misuse of this product or any other consequential loss.

Any warranty claim must be accompanied by a valid, dated proof of purchase. Evolution Aqua, Bermuda, its distributors and dealers shall not be held liable for any loss of fish, plants or any other livestock as a result of any failure or defect of this product.

The installation and use of your product outside of our recommendations as printed in this manual may also void the warranty.



www.bermudawatergardens.com

BERMUDA an Evolution Aqua brand.
Evolution House, Kellet Close, Wigan, Lancashire, WN5 0LP

DISTRIBUTED BY: Certikin, Witan Park, Avenue 2,
Station Lane Industrial Estate, Witney, Oxfordshire, UK, OX28 4FJ