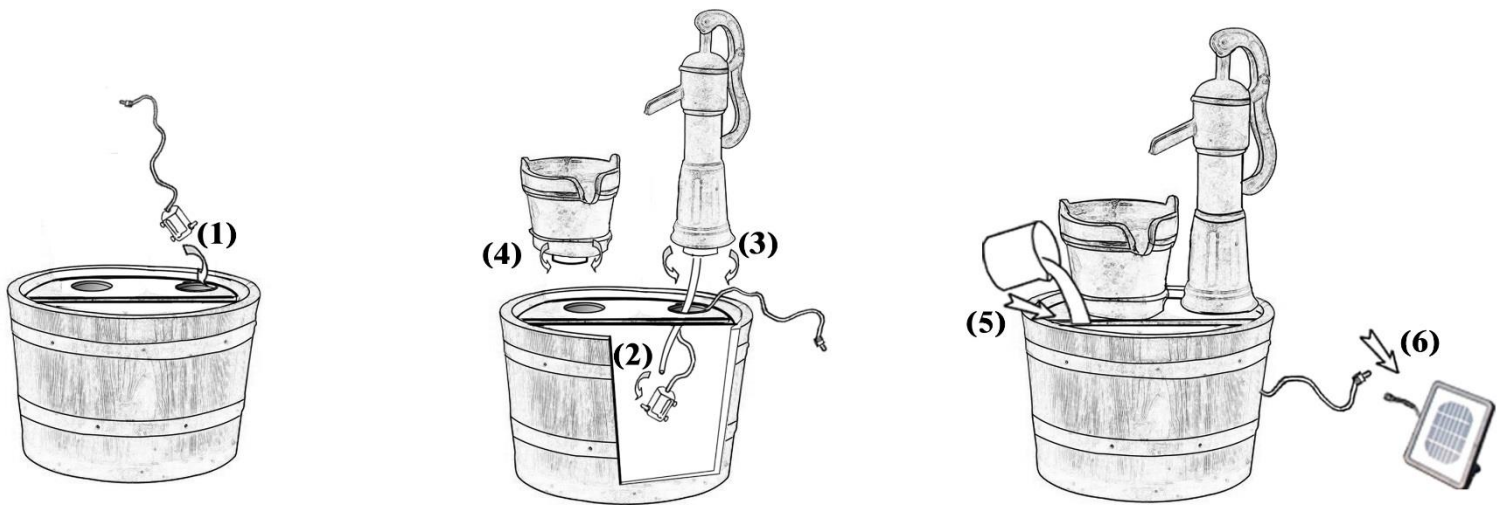


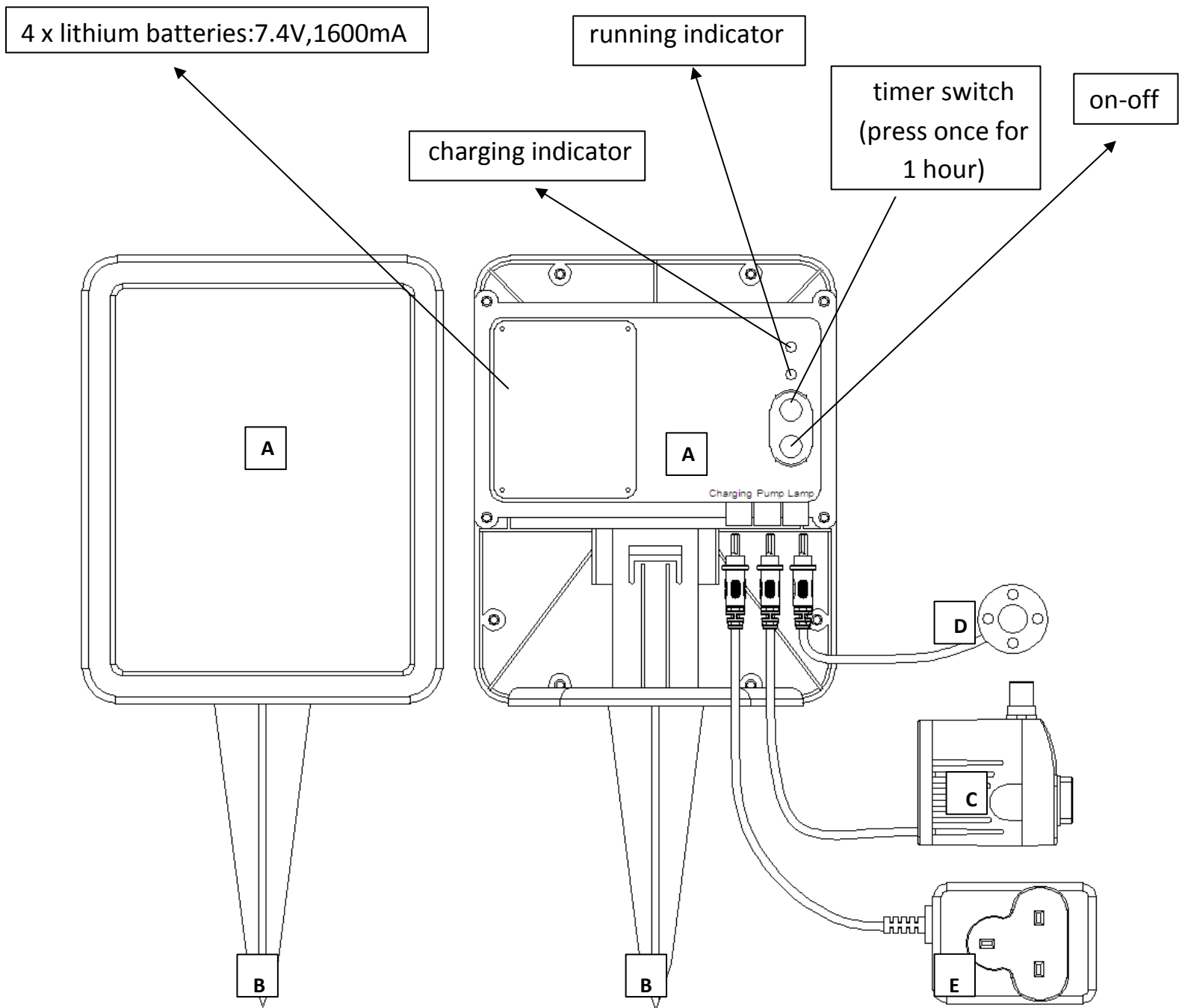
Assembly Instructions

Product Code : **PWF3510**

Thank you for purchasing a Solar Creations Water Feature which includes a SPK250B6v Solar Pump Kit.



- Remove cover in back of solar panel & put in x4 batteries provided
- Connect mains charger to solar panel and charge indoors for 8 hours (The sun will recharge after initial mains charge)
- Remove charger and take solar panel to the location of water feature
- Connect clear pipe from top bowl to pump
- Connect pump lead to your solar panel
- Place your light in bottom bowl
- Connect light to solar panel
- Fill with water until pump is covered
- Press the "on" button
- Timer button can be pressed and pump will work for 1 hour



What's included?

4x lithium batteries

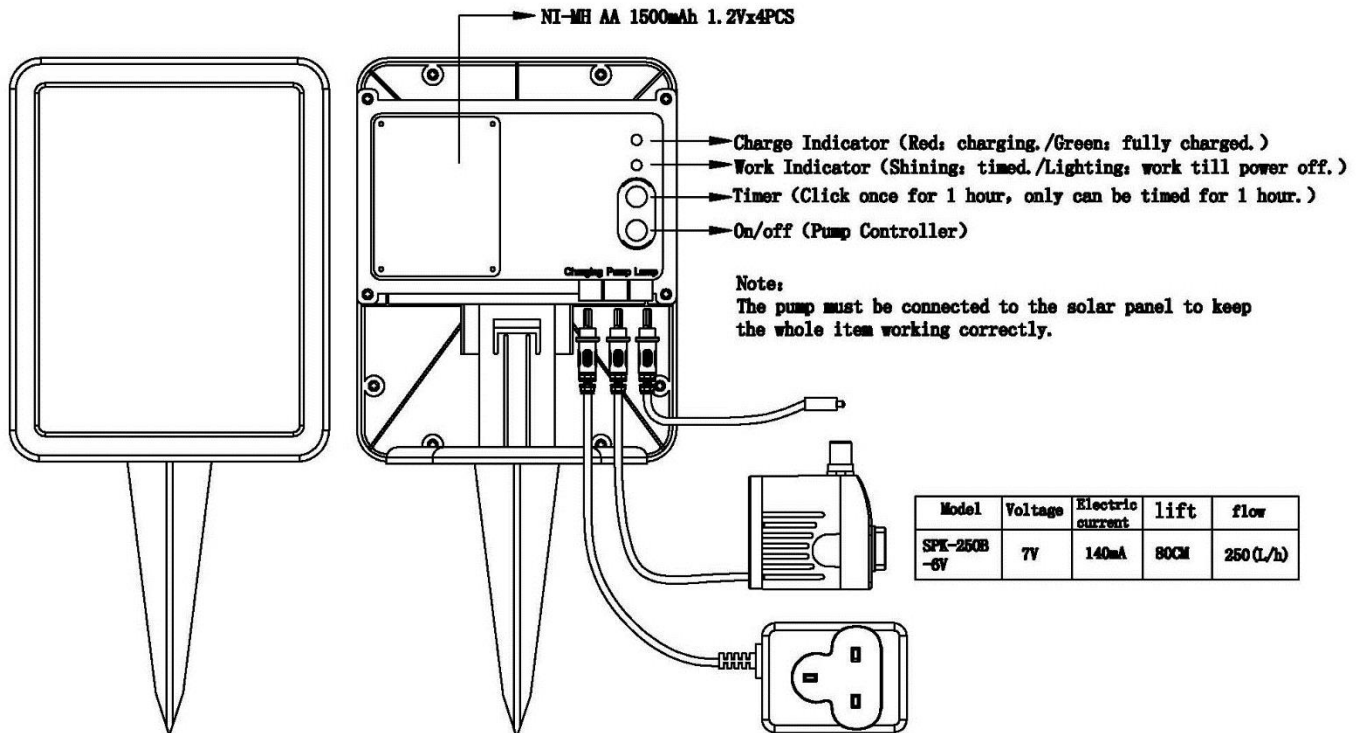
A Solar panel

B Ground peg

C Pump

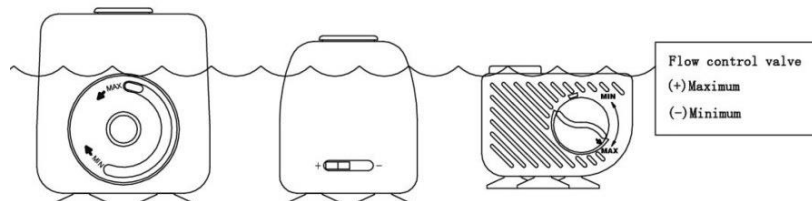
D Led Light (only supplied with certain products)

E Indoor Mains Charger



Operating Instructions

- Remove your "Solar Pump Kit" from the box
- Fit the batteries into the Solar Panel *and charge for 8 hours using the supplied mains charger*
- When the top light is flashing your battery is charging*
- When the light is green your Solar Panel is ready to use*
- Attach "A" Solar Panel to "B" Ground Peg & place in ground
- Attach "C" pump to the socket marked pump on the reverse of solar panel
- Please make sure the pump plug is fully inserted into the panel*
- Ensure your solar panel is situated in direct sunlight (Solar panel is weather proof but not submersible)*
- Avoid shady areas eg. near trees, houses, walls etc*
- Place your pump into the water feature/pond
- Fill your Water feature/pond to maximum level of water
- Ensure minimum water level is similar to diagram below



- The pump is now ready to use
- To turn it on push the on/off button on the rear of the panel
- The pump will now run continuous until it is switched off or the battery charge runs out*
- If you use the timer switch the pump will run for 1 hour
- The batteries will recharge when the solar panel is in direct sunlight or can be recharged using the supplied indoor charger
- If your kit contains a LED light "D" this is attached to the socket marked "lamp" on the reverse of your solar panel

Only charge your solar panel indoors, unplug your pump & led light before charging
The rechargeable batteries can be replaced if required



SPK-250B6v
SOLAR PUMP KIT
with **BATTERY BACKUP**



SAFETY INSTRUCTIONS

- Always maintain a level of water to sufficiently cover the pump.
- Always unplug the pump from solar panel before cleaning and handling.
- Use with clean water only & DO NOT place it in other liquid.
- Never let the pump run dry.
- Do not use the pump in water above 86 F or 30°C. .
- DO NOT lift, carry, or pull the pump by the power cord.
- DO NOT replace the pump cord & stop using the pump if it sustains damage.

PUMP MAINTANCE & TROUBLESHOOTING

To clean the pump

- Unplug the pump from solar panel. Use a small soft brush or place it under water stream to remove debris.

To keep water clean

- Periodically change water to prevent water from becoming sticky and forming microorganisms.

If the pump fails to run, the following should be checked:

- NOTE-Always disconnect the pump from solar panel before checking.
- Check the water level to make sure the pump is completely submerged.
- Check the pump discharge and tubing for kinks and obstructions.
- Algae buildup can be flushed out with a garden hose.
- Remove the pump front cover & plate to access the impeller area.
- Turn the rotor to ensure it is not broken or jammed.
- Gently pull the impeller/rotor assembly out of the pump housing.
- Rinse the impeller/rotor assembly and the cavity with clean water.
- If breakage or surface damage is found please contact Aqua Flo for spare parts or a replacement product.

Your Solar Pump Kit has a 1 year limited warranty

www.aquacreationsuk.com
www.aquaflopump.com