

Planter Barrel Water Feature Instructions

BERMUDA

PREPARATION

Before beginning assembly, please read all warnings and safety precautions.

WARNING

- To reduce the risk of electric shock, plug-in the pump to a residual current device (RCD) (not supplied).
- Do not exceed the voltage shown on the pump.
- Always disconnect the pump from the power source before performing any maintenance or work on the pump, light(s) or any fountain fittings.
- Inspect the power cord for damage before installation and/or maintenance. Replace the entire pump if damage is found.
- Use a proper power source as indicated on the pump label. Keep the cord away from high temperatures and/or heat sources.
- Do not lift the pump by its power cord.
- Keep the water feature out of reach of children.
- Do not let the pump run dry. Pump must be completely submerged for proper operation and cooling.
- Do not pump hot liquids.
- Operate with freshwater only. Avoid heavily chlorinated water and water with high PH levels.
- Place water feature outdoors on a clean, level surface.
- Store indoors during cold weather periods. Do not operate in freezing weather conditions.
- Only use with the pump / transformer / adapter provided.



ASSEMBLY INSTRUCTIONS

1. Assemble the top fountain section first (use the short silver coloured screws)

- Turn the top section up-side down.
- Fasten the three supports to the top – use six of the short silver coloured screws.
- Fit together snugly, but do not over tighten the screws.

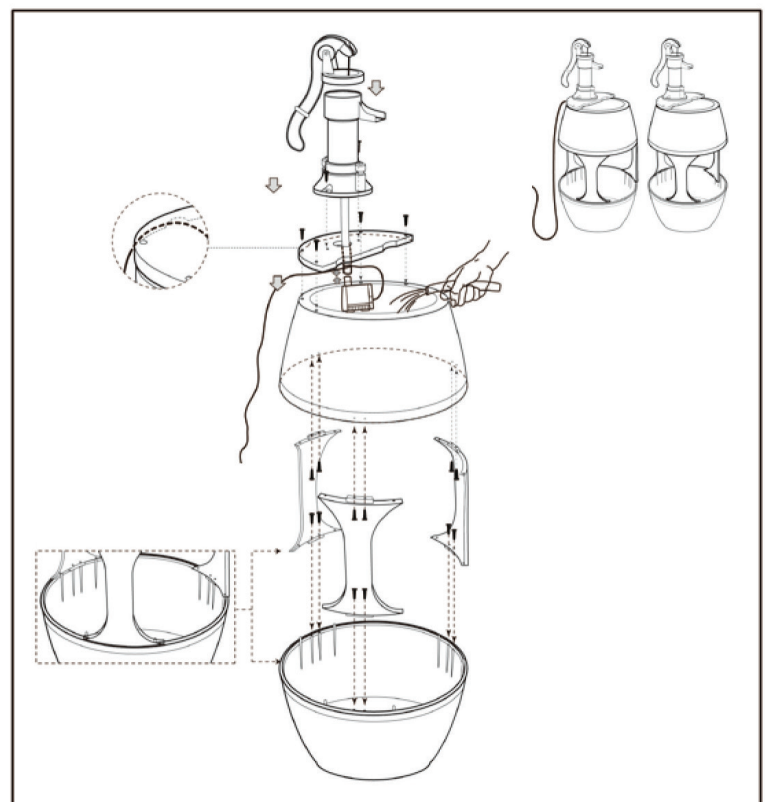
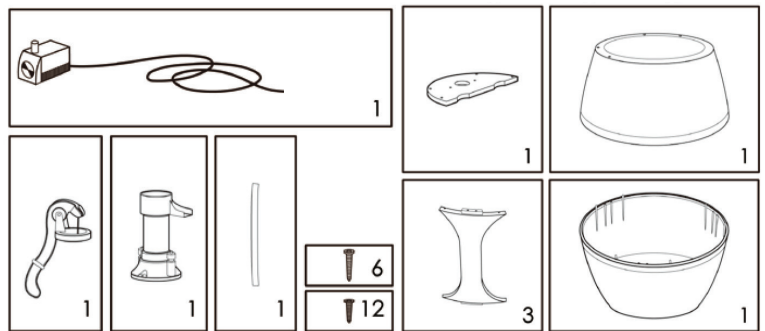
2. Assemble the top to the bottom planter section (use the short silver coloured screws)

- Put the top onto the bottom section.
- Line up each support by hand and align the pins.
- Use 6 screws to fit all the parts in place.
- Go back and tighten the top and bottom screws.

3. Assemble the fountain (use the longer bronze colored screws)

- Put the pump into the fountain section and lay the cord over the edge between the 4 screw holes.
- Put the hand pump support on top and line up the 4 holes by eye. The electrical cord should be located in the groove in the centre of the support.
- Start each of the screws by hand and then but do not over tighten them. After all are in place, go back and tighten them.
- Mount the hose to the bottom of the decorative hand pump.
- Put the decorative hand in place. The hose goes through the centre hole.
- Fasten with the 2 remaining screws.
- Hook the hose to the top of the pump
- Fill the base barrel with clean water, plug in and test the water flow. Fill to within 25 to 30mm below rim of the base.
- When the fountain has been tested and running then add plants to the base planter barrel. Use potting soil. There are three small holes in the bottom to drain excess water. Planting soil that drains easily should be used for best growing conditions. Alternatively use artificial plants.

COMPONENTS



Planter Barrel Water Feature Instructions



CLEANING AND MAINTENANCE

Before beginning assembly, please read all warnings and safety precautions.

- Make sure all connectors are tight and no water is getting in.
- Keep the water clean during the summer. Keep topping with water every 3 or 4 days with clean water.
- Clean any pipes every month to prevent any build-up of algae which could put extra pressure on your pump.
- Ensure any soil / dirt around the pump is contained and doesn't block the pump.
- Always make sure there is enough water for the pump to work otherwise you could damage the pump. NEVER RUN DRY.
- Make sure you clean the pump on a regularly basis. When you are cleaning, make sure the power is off.
- During the winter, bring the feature inside, give it a good clean and store it safely for next year.

GUARANTEE

This product is guaranteed against defects in material and workmanship for 12 months from the date of purchase, under normal usage.

The guarantee DOES NOT APPLY in case of improper use, negligence, lack of maintenance or accidental damage to the pump. If the pump fails due to a manufacturing fault within this period it will be either repaired or replaced free of charge. Moving parts or wearable parts including the impeller and any washers or O rings are not covered by the guarantee.

Should your Bermuda product stop working refer first to trouble shooting and if this does not help, return the product to the place of purchase.

Liability is limited to replacement of the faulty product only. No other costs will be reimbursed. This guarantee is not transferable and does not affect your statutory rights.

Do not attempt to tamper with the pump or solar panel. Do not access components inside the pump body, unless otherwise instructed in the instruction manual. Any damage occurred by doing so may invalidate the warranty.

The manufacturer or supplier shall not be responsible, or held liable for any damages caused by defective components or materials of this product, or for loss incurred by interruption of service, or any consequential/incidental damages and expenses arising from the production, sale use or misuse of this product or any other consequential loss.

Any warranty claim must be accompanied by a valid, dated proof of purchase. Evolution Aqua, Bermuda, its distributors and dealers shall not be held liable for any loss of fish, plants or any other livestock as a result of any failure or defect of this product.

The installation and use of your product outside of our recommendations as printed in this manual may also void the warranty.