

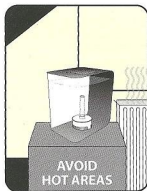
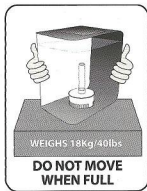
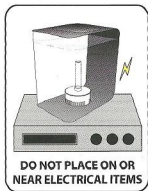
Hello.

Your biOrb is designed so that you can set it up easily.

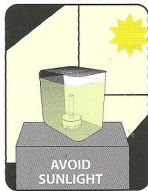
biOrb®  
FLOW

This guide will help you understand how your aquarium works and how to create a healthy environment for your fish. Please read these instructions carefully before filling your aquarium with water.

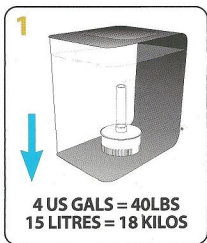
**This is not a toy, adult supervision is recommended. Removing the serial number or dismantling your aquarium will invalidate your guarantee. Setup video guide available on [www.reef-one.com](http://www.reef-one.com)**



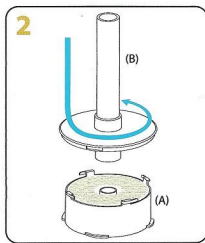
**RISK OF GREEN WATER**



## Setting up your biOrb FLOW.

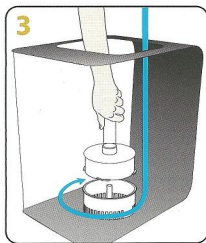


Carefully remove contents from the box and check. Choose a suitable location for your aquarium noting all the advice above and place your aquarium on a strong and level surface. **Remember the aquarium needs a power source within reach.**



Remove plastic wrapper from filter cartridge (A) then offer up cartridge to base of bubble tube (B), locate tabs and twist in a counterclockwise direction ensuring all cartridge tabs are fully located.

**New cartridges are available from a biOrb dealer.**



Remove the light unit and lid from the biOrb then take the bubble tube and filter cartridge assembled in step 2 and insert into the biOrb. Turn the bubble tube clockwise until it locks in position. When correctly located, the bubble tube and filter will remain in place.

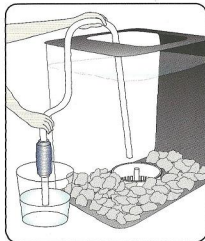
## Caring for your biOrb FLOW.



Fill the aquarium with tap water to approximately 3" / 7.5cm above the top of the bubble tube and add Stress Coat.

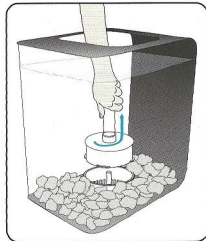
Leave the aquarium running for at least **24 hours** before adding Stress Zyme and then you will be ready to add your first fish.

**DO NOT immerse the light unit in water.**



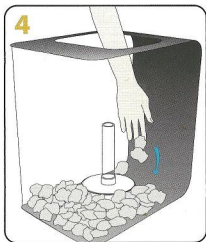
**Every 2 weeks** a 30% water change is desirable to reduce pollution in the water. Use a sachet of water treatment in 4 litres / 1 US Gallon of tap water.

**A Cleaner Pump** (not supplied) is an easy way to remove debris and siphon out the water. **After setting up never use tap water to clean the ceramic media, this will kill biological filtration.**



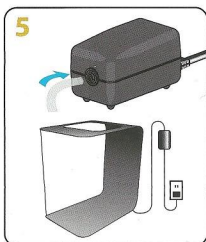
**Every 6 weeks** a new filter cartridge will be required to maintain the water condition. The cartridge and instructions are in the **Service Kit**.

**Green Water** is caused by algae growth. Some algae is natural in healthy aquariums. However, if your aquarium water quickly turns green it may be caused by too much light, overfeeding, too many fish or high levels of nitrate and phosphate in the tap water.

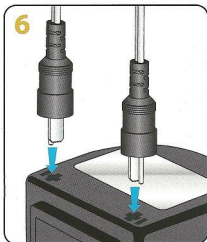


Wash the ceramic media supplied **thoroughly** before placing around the filter body, ensuring none remains on top.

**Use only ceramic media supplied, do not use aquarium gravel. Discard any pieces smaller than a pea.**

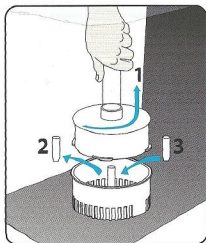


Connect the airline to the pump as shown and place in a suitable position. **Positioning the pump higher than the aquarium water level will prevent water leakage or damage to pump should valve failure occur.**



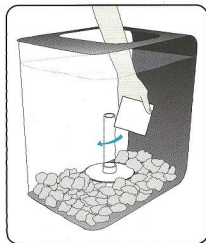
Plug the pump and light unit plug into the separate sockets on the transformer supplied, then plug the transformer into the power source and turn on.

**The pump should be left running 24hrs a day, only switch it off during filter cartridge changes and cleaning.**

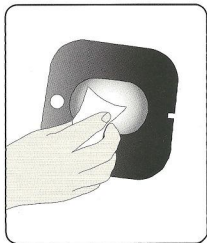


**The Air Stone** in the base of the aquarium will eventually become blocked restricting the flow of bubbles into the aquarium, the **Air stone** should be replaced every 6 months.

**The Air Pump** will wear out over time and could become noisy, reducing the flow of bubbles even after changing the air stone. Replace immediately after failure, to avoid problems.



**Cleaning the aquarium** requires care to prevent scratching. Never use household detergents, polishes or scouring pads. The outside of the bowl can be wiped with a soft cloth or purchase a **Plastic Scratch Remover & Polish** kit. The inside should be cleaned with a **Cleaning Pad**.



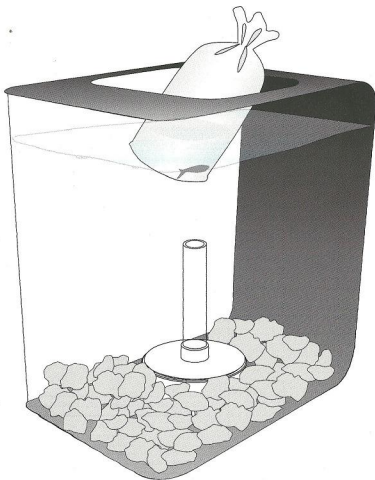
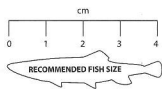
**Cleaning the light** is easy and is a good idea to keep your aquarium looking at its best. Simply wipe the lens with a **Cleaning Pad**.

Your long life LEDs typically last for over 50,000 hours and should never need replacing.

## Choosing and introducing your fish.

Do not crowd with decor or over stock with fish, your biOrb FLOW will house up to 6 small fish. When introducing small fish, add gradually at a rate of 2 every 28 days. This will encourage a population of filter bacteria in the ceramic media that will keep the water clean. Adding fish too quickly may cause the water to be polluted and unsafe for fish. When adding fish follow instructions from your aquatic shop to ensure the fish are gently acclimatised to their new home. Feed each fish 8-10 of the pellets supplied per day, do not overfeed. For more information on caring for your aquarium please visit [www.reef-one.com](http://www.reef-one.com)

**Feed each fish 8-10 of the pellets supplied per day, do not overfeed.**  
**CAUTION: Overfeeding will harm fish and pollute water**



**REEF**  
**ONE**

Tel: UK +44 (0)1603 710339  
Fax: UK +44 (0)1603 710029

Tel: FR 0811 850 113  
Tel: DE 0800-181-9091

Email: [info@reef-one.com](mailto:info@reef-one.com)  
[www.reef-one.com](http://www.reef-one.com)